

# **CENTRAL WEST END**

## ***Community Needs Assessment on Public Infrastructure***

**August 11, 2016**

**Schlafly Library**

# Tonight's Community Meeting

- 1) **CWE Needs Assessment Committee**
- 2) **Presentation on Proposed  
Public Infrastructure Projects**
- 3) **Small Groups Breakout Session**
  - **Discussion & Survey**
- 4) **Committee's Next Steps**

# Central West End Needs Assessment Committee

## **Purpose:**

- ***Identify the public infrastructure needs and gaps in services in CWE***
- ***Create a 5-Year Action Plan (2017-2021) to address those needs***

“Public Infrastructure” is the *built environment* that makes our neighborhood a more livable, walkable, and enjoyable place to live.

# Proposed Public Infrastructure Projects

- 1) Pedestrian Lighting
- 2) Sidewalks
- 3) ADA Ramps & Crosswalks
- 4) Streets & Alleys
- 5) Trees Installation & Pruning
- 6) Public Art
- 7) Others?

# CWE Committee Timeline

April – July  
(4 months)

Aug – Oct  
(3 months)

Nov – Dec  
(2 months)

Public  
Infrastructure  
Priorities

Public  
Forum on  
Priorities

Public  
Forum on  
Action Plan  
Draft

5-Year  
Action Plan  
Complete  
Project Open  
House

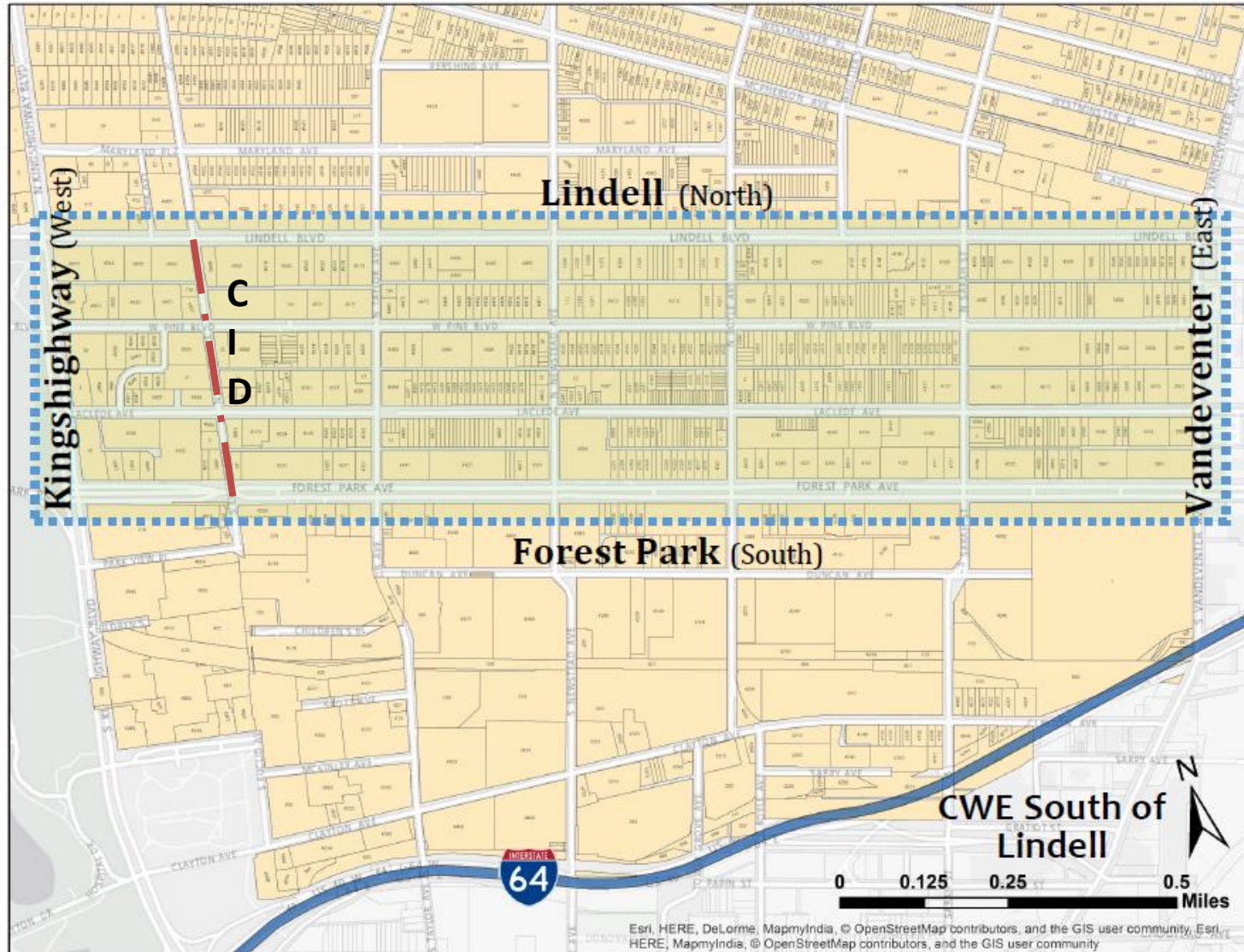
**Tonight!**

*Identify  
Neighborhood  
Priorities*

*Identify Key  
Resources*

*Complete  
Action Plan*

# CWE Neighborhood Boundaries



Esri, HERE, DeLorme, MapmyIndia, © OpenStreetMap contributors, and the GIS user community, Esri, HERE, MapmyIndia, © OpenStreetMap contributors, and the GIS user community

# 2016–2017 CWE Budgeted Projects

50/50 Sidewalks	\$ 30,000
Tree Pruning	\$ 10,000
New Trees	\$ 10,000
Tree Removals*	\$ 15,000
Dumpsters	\$ 15,000
Trial Speed Hump	\$ 5,000
ADA Ramps & Sidewalks on Newstead	\$ 35,000
Street Resurfacing of 4500 Laclede	\$ 36,000
Alley Resurfacing of 3900-4000 West Pine/Laclede	\$ 16,000
<b>FY 16-17 TOTAL Project Cost \$ 172,000</b>	

\*Funds leftover from previous years to be used for the removals of diseased ash trees



# Pedestrian Lighting

## Lollipop Lighting

*Outdated – Needs replacement*



*Picture: 4900 Block of West Pine*



# Pedestrian Lighting

## Granitoid King Luminaire

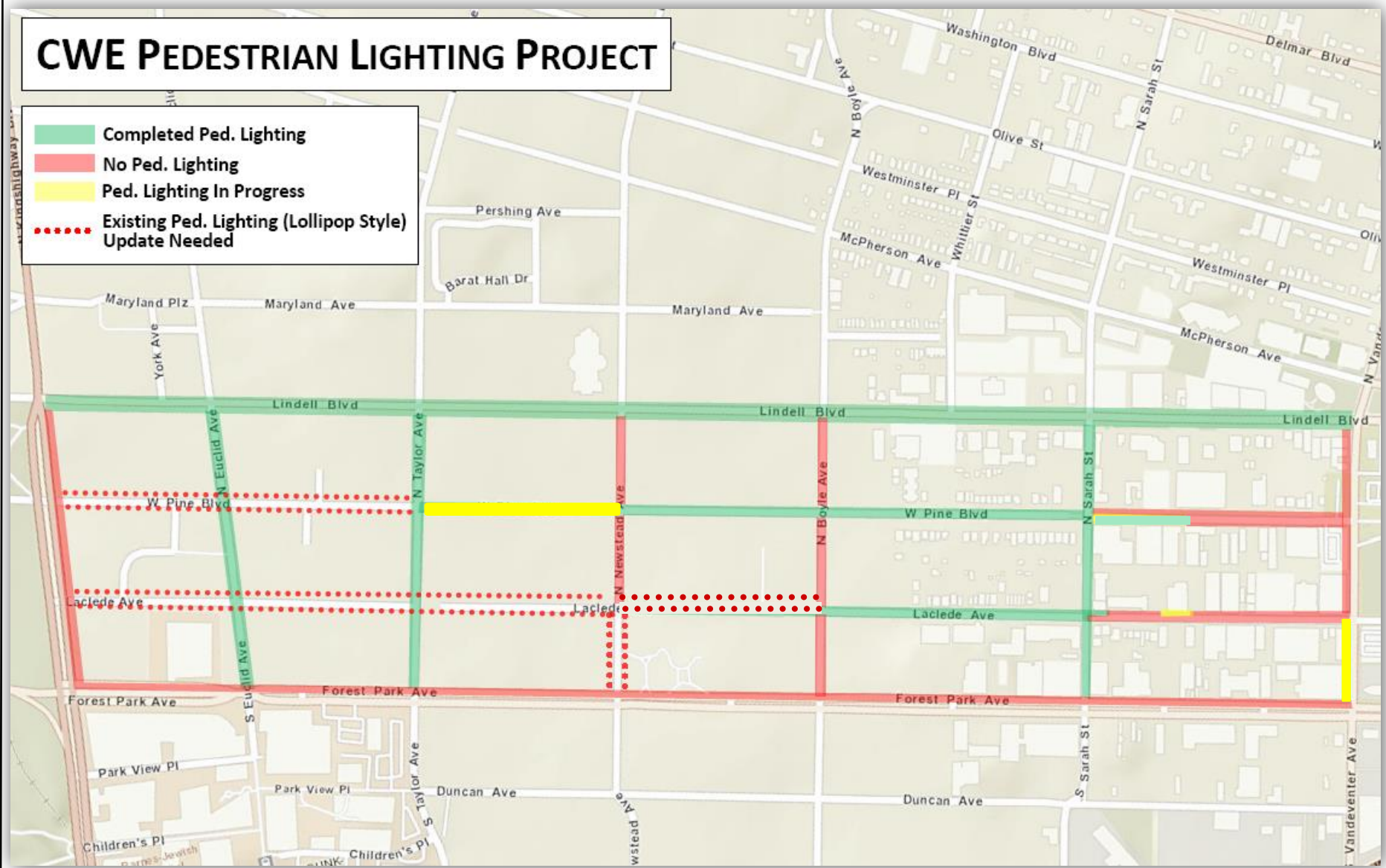
*Updated lighting*



*Picture: Updated lighting on Taylor*

# CWE PEDESTRIAN LIGHTING PROJECT

- Completed Ped. Lighting
- No Ped. Lighting
- Ped. Lighting In Progress
- Existing Ped. Lighting (Lollipop Style) Update Needed



# Sidewalks

## 50/50 Program



*Picture: 1XX North Taylor*



*Picture: 44XX Laclede*



# Ramps & Crosswalks

## ADA-Compliant Ramps



*Picture: Lindell at Newstead, SE corner*

# ADA Ramps & Crosswalks Survey



Ramps to be completed  
with Forest Park Pkwy  
Improvements

Newstead ramps to be  
completed '16-'17

# Newstead Ramps & Crosswalks

## Missing Ramps will be completed in 2016



*Picture: Newstead at Laclede, SE corner*



# Ramps & Crosswalks

## Non-Compliant ADA Ramps



*Picture: 4300 Laclede*



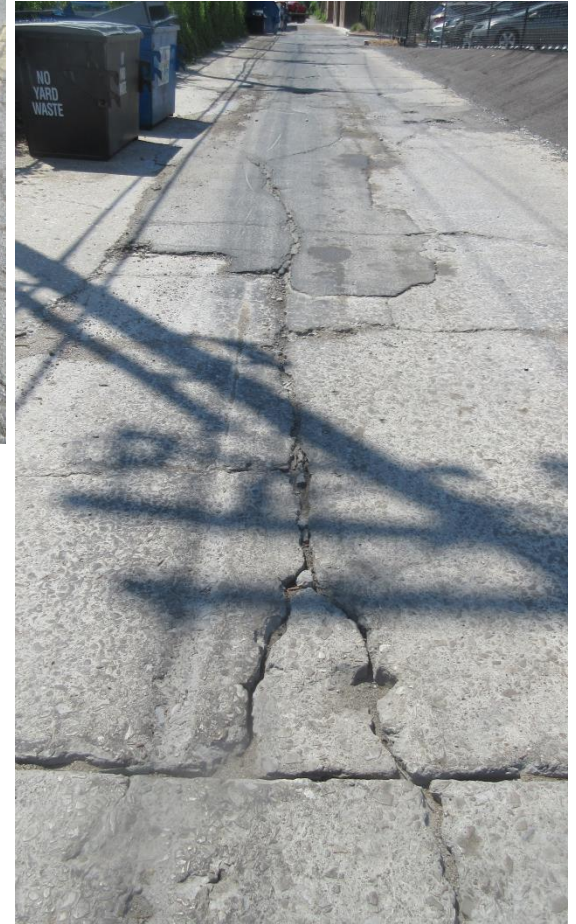
*Picture: Laclede at Boyle, NW corner*



*Picture: Boyle at Laclede, NE corner*

# Streets & Alleys

## Maintenance and Resurfacing

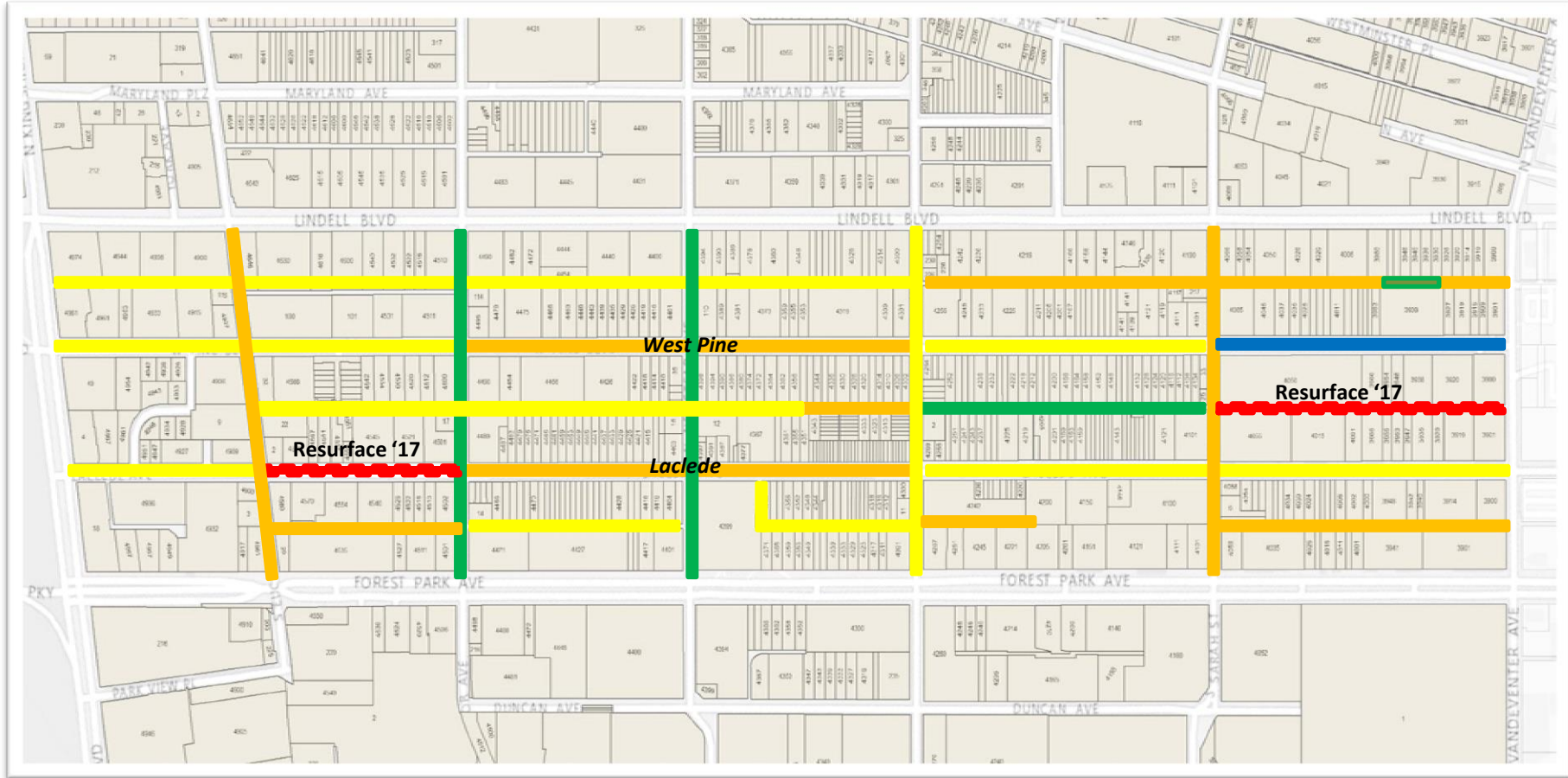


*Pictures: 3900 Block of West Pine*

*Picture: Alleyway between West Pine & Laclede*



# Street & Alley Conditions



# Trees Installation & Pruning



*Picture: Tree Canopy at 43XX Laclede*

# Trees Installation & Pruning

# OF TREES	STREET NAME
2	Buckingham
10	Forest Park
16	Laclede
9	Lindell
6	N Boyle
1	S. Boyle
3	N. Euclid
3	N. Newstead
4	Sarah
12	West Pine
<b>TOTAL: 66 CWE trees</b>	

# Why Public Art?

Public Art **adds meaning** to our cities and **create uniqueness** to our communities and neighborhoods...

...it is the **mirror image of its community**, an intersection between discipline and ideas.

Public Art is **truly for everyone**, even if some don't pay any attention to it, it is embedded in their way they think, feel and act.



# Public Art Ideas

- **Bike racks - reused materials, cattail bike rack**
- **Bike kiosk station (at West Pine)**
- **Seating - garden benches, shadow chairs**
- **Bollards**
- **Outdoor seating areas**
- **Newspaper enclosures**
- **Green walls**
- **Trash receptacles**
- **Garden art/planters**
- **Paving at intersections**
- **Pocket parks**
- **Entry or Intersection lighting**

# Small Group Discussion

## Public Infrastructure Project Needs

- 1) Pedestrian Lighting
- 2) Sidewalks
- 3) ADA Ramps & Crosswalks
- 4) Streets & Alleys
- 5) Trees Installation & Pruning
- 6) Public Art

**OTHERS?**

# Small Groups Breakout Session

## 1. What are we missing?

*What does this neighborhood still need to make it successful and attractive?*

## 2. Prioritizing:

- Pedestrian Lighting
- ADA Ramps & Crosswalks

## 3. Survey: Rank your priorities from 1 to 6

(1 = most important, 6 = least important)

# Next Steps

- **Consensus on Key Infrastructure Needs**
- **Identify Key Resources**
  - **Next Community Meeting in October**
- **Create Action Plan**
  - **By December 2016, Open House**